



ARTIST RENDERING FOR ILLUSTRATIVE PURPOSES ONLY

**AJMAN**  
VILLAS

AL ZAHYA - AJMAN



# Al-Taif RED

Real Estate Development

Welcome to a realm where dreams take shape and spaces transform into vibrant realities. Our real estate development company stands at the threshold of creating inspiring living and working environments that breathe life into your aspirations.

We invite you to immerse yourself in a journey through our vision, expertise, and commitment to crafting extraordinary spaces. From residential marvels to commercial landmarks, we are dedicated to shaping communities that resonate with the pulse of modern life.

Join us as we open the doors to a world of innovation, architectural brilliance, and a profound understanding of what makes a space truly exceptional. Experience the art of real estate development, where every project is an embodiment of our passion for creating spaces that transcend the ordinary. Welcome to a future where your lifestyle meets our ingenuity, where your dreams find a home.





# AJMAN

VILLAS



AL ZAHYA - AJMAN



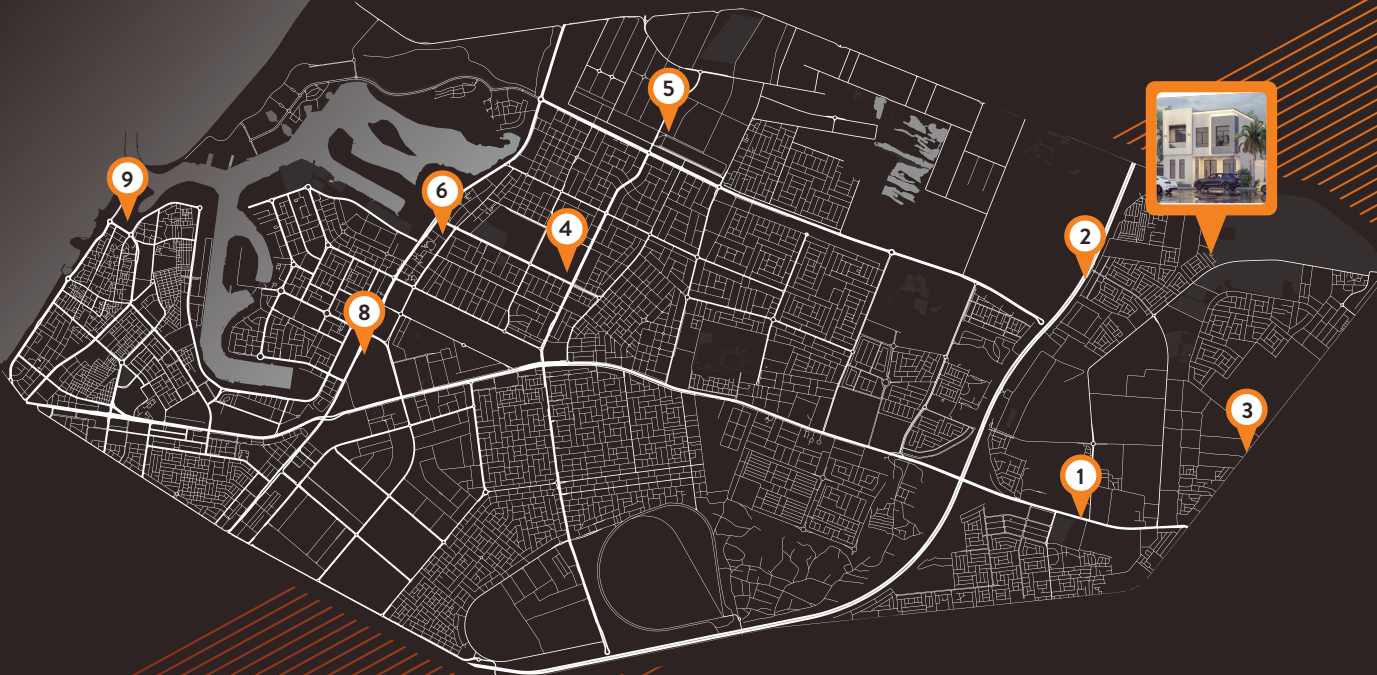
# AJMAN

## VILLAS

### NEAR TO

- 1 Sheikh Maktoum Bin Rashid St 6 Min
- 2 Sheikh Mohammed Bin Zayed Rd 7 Min
- 3 Emirates Rd 8 Min
- 4 Ajman University 18 Min
- 5 Ajman China Mall 19 Min
- 6 Sheikh Zayed Mosque 20 Min
- 7 Sharjah International Airport 23 Min
- 8 Ajman City Center 23 Min
- 9 Ajman Marina 32 Min

### AL ZAHYA - AJMAN







# AJMAN VILLAS

TOTAL AREA FOR VILLA.: 284.63 SQM - 3062.61 SQF

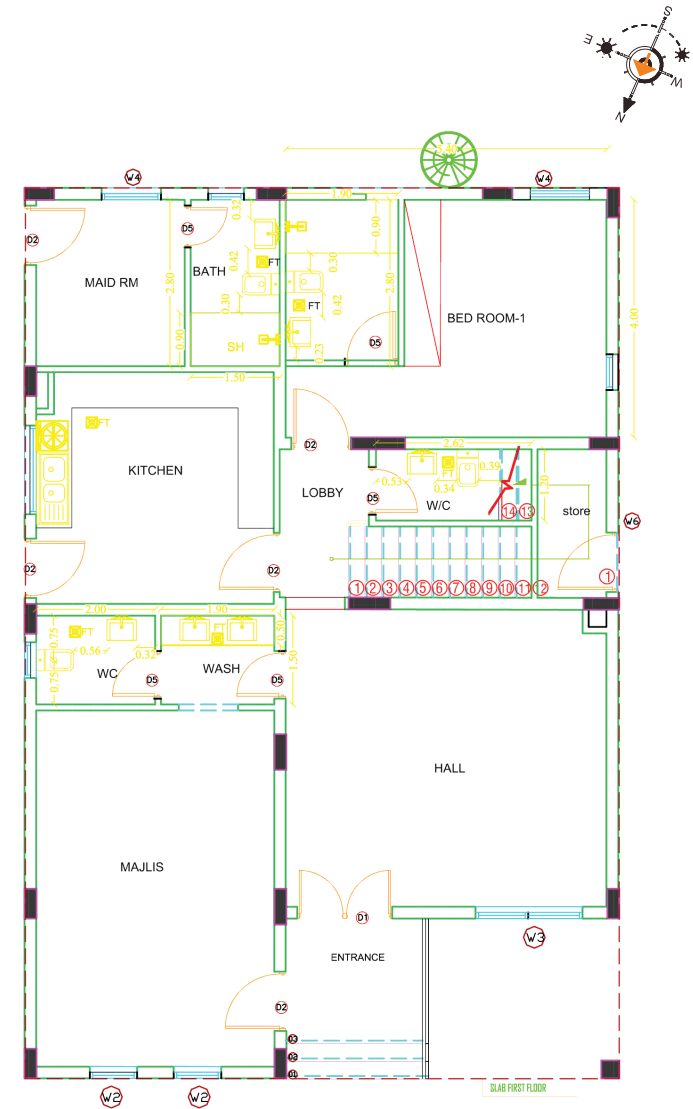
TOTAL 4 VILLAS



# AJMAN VILLAS

## GROUND FLOOR

- One Bedroom
- Kitchen
- Hall
- Majlis
- Maid room
- Store
- Wash and WC



**GROUND FLOOR AREA.:** 134.63 SQM - 1448.61 SQF

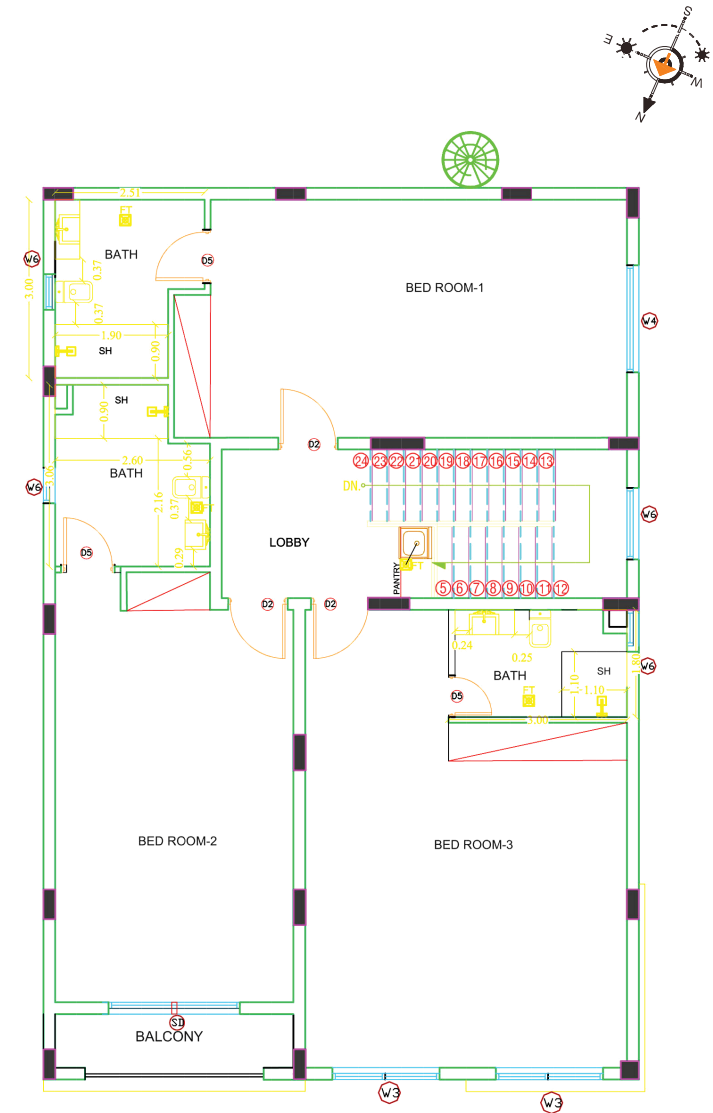
Disclaimer: 1. All room dimensions are measured to structural elements and exclude wall finishes and construction tolerances. 2. All dimensions have been provided by our consultant architects. 3. All materials, dimensions and drawings are approximate. Information is subject to change without notice. 4. Actual suite area may vary from the stated area. Drawings not to scale. The developer reserves the right to make revisions. 5. Calculation of suite area is measured as the area bounded by the centre line of demising or partition walls separating one unit from another unit, the exterior face of all exterior walls, and the exterior face of the corridor wall enclosing the adjoining unit. 6. Calculation of balcony area is measured as the area bounded by the centre line of demising or partition walls separating one unit from another unit, the outmost face of the enclosing guard and the external face of the adjoining balcony. 7. The units are measured at typical floor in the building. Columns may vary in size depending on the floor level. 8. For each unit type, unit sizes and details might be slightly different. Please refer to the sales and purchase agreement for the actual size of each specific unit.



# AJMAN VILLAS

## FIRST FLOOR

- Three Bedrooms
- Balcony



**FIRST FLOOR AREA.: 150.00 SQM - 1614.00 SQF**

Disclaimer: 1. All room dimensions are measured to structural elements and exclude wall finishes and construction tolerances. 2. All dimensions have been provided by our consultant architects. 3. All materials, dimensions and drawings are approximate. Information is subject to change without notice. 4. Actual suite area may vary from the stated area. Drawings not to scale. The developer reserves the right to make revisions. 5. Calculation of suite area is measured as the area bounded by the centre line of demising or partition walls separating one unit from another unit, the exterior face of all exterior walls, and the exterior face of the corridor wall enclosing the adjoining unit. 6. Calculation of balcony area is measured as the area bounded by the centre line of demising or partition walls separating one unit from another unit, the outmost face of the enclosing guard and the external face of the adjoining balcony. 7. The units are measured at typical floor in the building. Columns may vary in size depending on the floor level. 8. For each unit type, unit sizes and details might be slightly different. Please refer to the sales and purchase agreement for the actual size of each specific unit.



ALTAIFRED.COM