



**RESIDENTIAL BUILDING
IN MEYDAN**

ALTAIF
ALTAIF REAL ESTATE

ALTAIF
ALTAIF REAL ESTATE

Al-Taif RED

Real Estate Development

Welcome to a realm where dreams take shape and spaces transform into vibrant realities. Our real estate development company stands at the threshold of creating inspiring living and working environments that breathe life into your aspirations.

We invite you to immerse yourself in a journey through our vision, expertise, and commitment to crafting extraordinary spaces. From residential marvels to commercial landmarks, we are dedicated to shaping communities that resonate with the pulse of modern life.

Join us as we open the doors to a world of innovation, architectural brilliance, and a profound understanding of what makes a space truly exceptional. Experience the art of real estate development, where every project is an embodiment of our passion for creating spaces that transcend the ordinary. Welcome to a future where your lifestyle meets our ingenuity, where your dreams find a home.





RESIDENTIAL BUILDING IN MEYDAN

1B + GF + 5 FLOORS + ROOF+ UPPER ROOF



COMMUNITY CENTRE
WITHIN REACH
(SPINNEYS)



NAD AL SHEBA
GRAND MOSQUE



MEYDAN GOLF
COURSE



NAD AL SHEBA
PARK

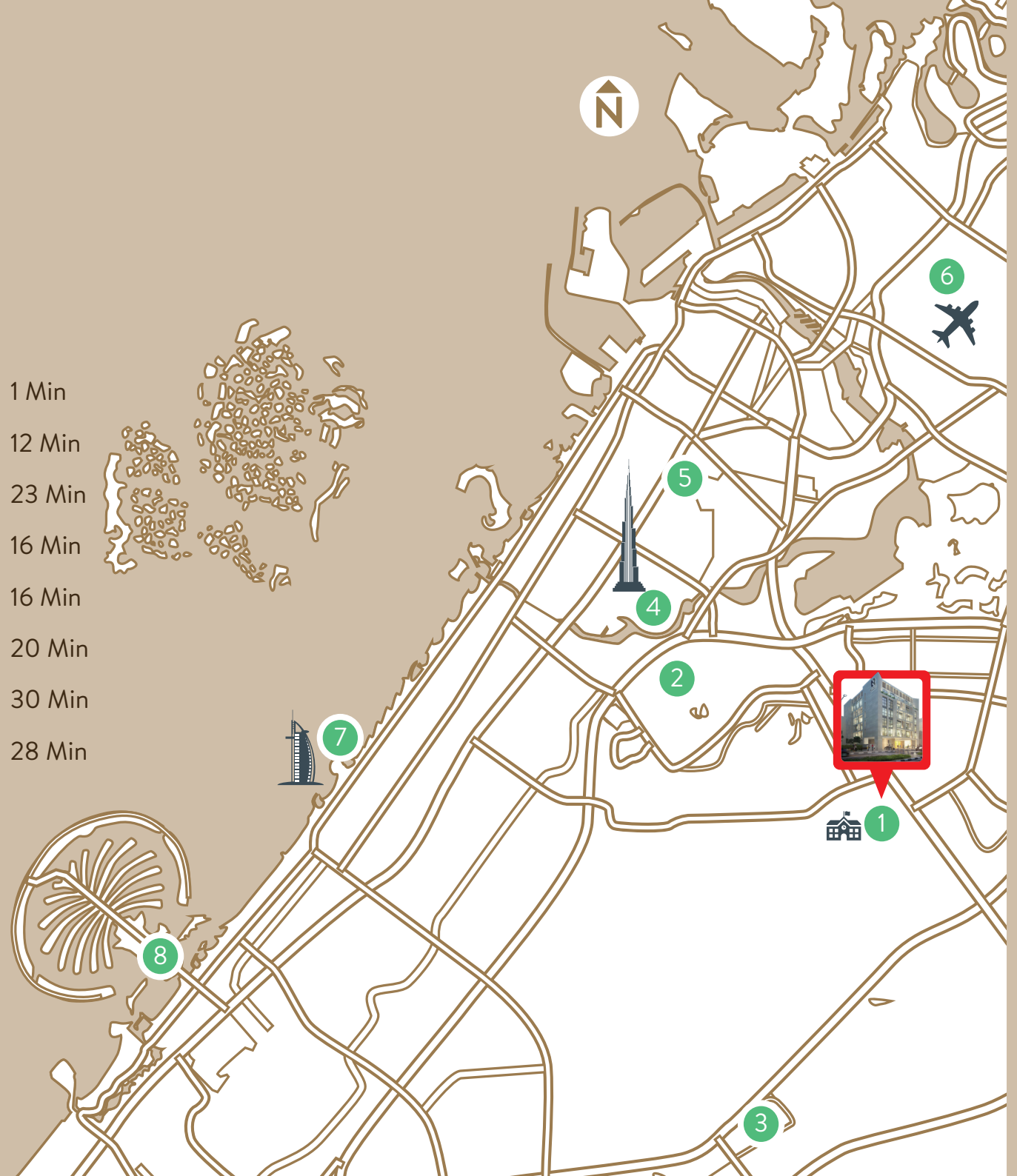


KENT COLLEGE
DUBAI

RESIDENTIAL BUILDING IN MEYDAN

NEAR TO

- 1 Kent College Dubai 1 Min
- 2 The Meydan Hotel 12 Min
- 3 Global Village 23 Min
- 4 Dubai Mall 16 Min
- 5 Dubai World Trade Centre 16 Min
- 6 Dubai International Airport (DXB) 20 Min
- 7 Burj Al Arab 30 Min
- 8 Palm Jumairah 28 Min



RESIDENTIAL BUILDING IN MEYDAN

Basement Parking
Ground Floor
4 Typical Floors -from (1 to 4)
Fifth Floor
Roof Floor (Swimming Pool + GYM)
Upper Roof

10 Studios
10 One Bedroom Apartments
20 Two Bedroom Apartments

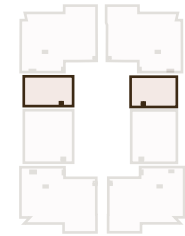
TYPICAL FLOOR PLAN From (1 to 4)



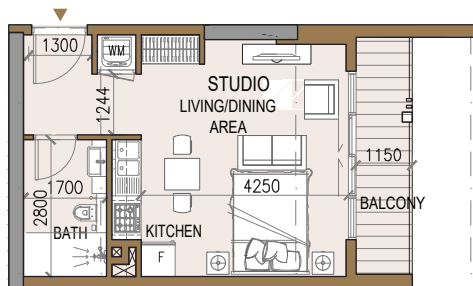
Disclaimer: 1. All room dimensions are measured to structural elements and exclude wall finishes and construction tolerances. 2. All dimensions have been provided by our consultant architects. 3. All materials, dimensions and drawings are approximate. Information is subject to change without notice. 4. Actual suite area may vary from the stated area. Drawings not to scale. The developer reserves the right to make revisions. 5. Calculation of suite area is measured as the area bounded by the centre line of demising or partition walls separating one unit from another unit, the exterior face of all exterior walls, and the exterior face of the corridor wall enclosing the adjoining unit. 6. Calculation of balcony area is measured as the area bounded by the centre line of demising or partition walls separating one unit from another unit, the outmost face of the enclosing guard and the external face of the adjoining balcony. 7. The units are measured at typical floor in the building. Columns may vary in size depending on the floor level. 8. For each unit type, unit sizes and details might be slightly different. Please refer to the sales and purchase agreement for the actual size of each specific unit.

TYPICAL FLOOR

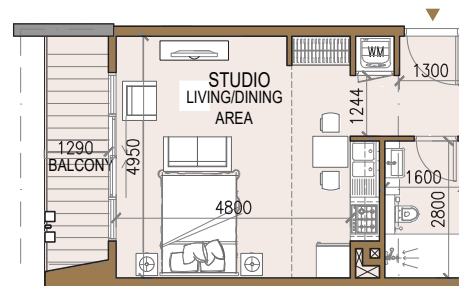
Floors (1 to 5)



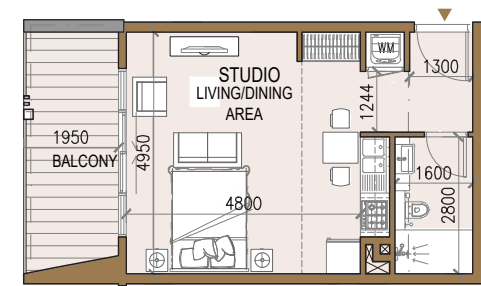
STUDIO TYPE



5 Units (floor 1 to 5)



4 Units (floor 2 to 5)



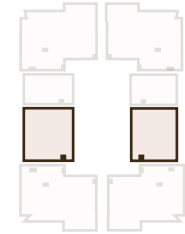
1 Unit (only on first floor)

TOTAL AREA APPROX.: 48 m² - 516.67 ft²

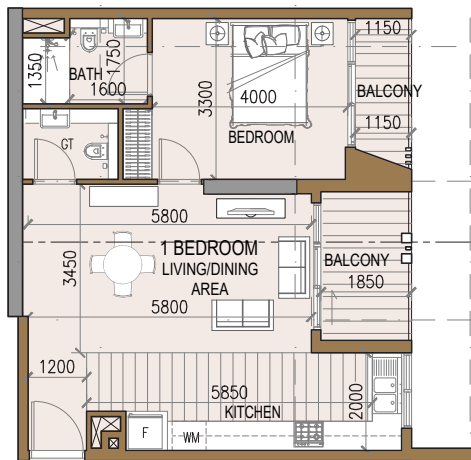
Disclaimer: 1. All room dimensions are measured to structural elements and exclude wall finishes and construction tolerances. 2. All dimensions have been provided by our consultant architects. 3. All materials, dimensions and drawings are approximate. Information is subject to change without notice. 4. Actual suite area may vary from the stated area. Drawings not to scale. The developer reserves the right to make revisions. 5. Calculation of suite area is measured as the area bounded by the centre line of demising or partition walls separating one unit from another unit, the exterior face of all exterior walls, and the exterior face of the corridor wall enclosing the adjoining unit. 6. Calculation of balcony area is measured as the area bounded by the centre line of demising or partition walls separating one unit from another unit, the outmost face of the enclosing guard and the external face of the adjoining balcony. 7. The units are measured at typical floor in the building. Columns may vary in size depending on the floor level. 8. For each unit type, unit sizes and details might be slightly different. Please refer to the sales and purchase agreement for the actual size of each specific unit.

TYPICAL FLOOR

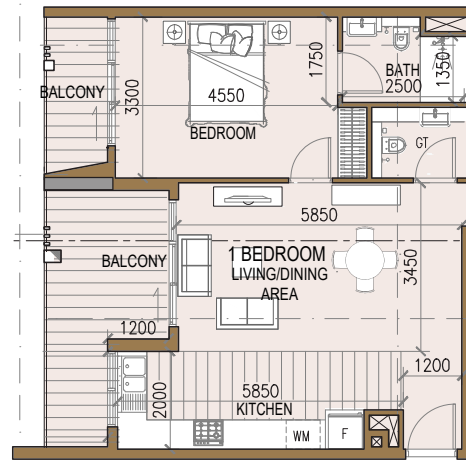
Floors (1 to 5)



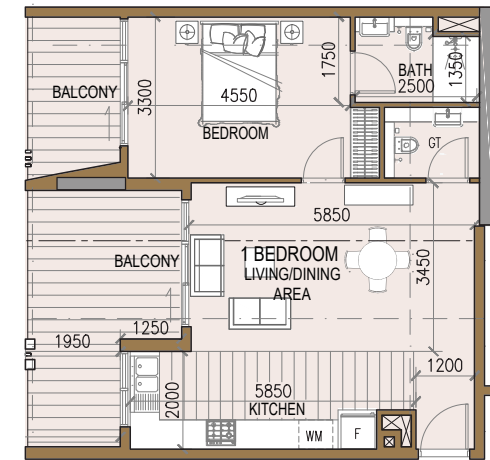
ONE BEDROOM



5 Units (floor 1 to 5)



4 Units (floor 2 to 5)



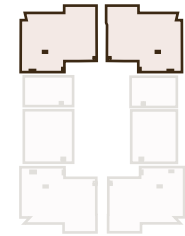
1 Unit (only on first floor)

TOTAL AREA APPROX.: 85.85 m² - 924.09 ft²

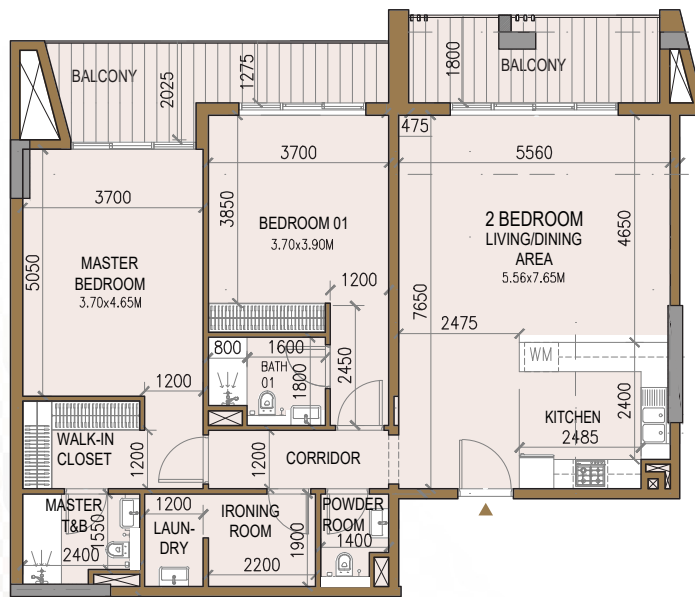
Disclaimer: 1. All room dimensions are measured to structural elements and exclude wall finishes and construction tolerances. 2. All dimensions have been provided by our consultant architects. 3. All materials, dimensions and drawings are approximate. Information is subject to change without notice. 4. Actual suite area may vary from the stated area. Drawings not to scale. The developer reserves the right to make revisions. 5. Calculation of suite area is measured as the area bounded by the centre line of demising or partition walls separating one unit from another unit, the exterior face of all exterior walls, and the exterior face of the corridor wall enclosing the adjoining unit. 6. Calculation of balcony area is measured as the area bounded by the centre line of demising or partition walls separating one unit from another unit, the outmost face of the enclosing guard and the external face of the adjoining balcony. 7. The units are measured at typical floor in the building. Columns may vary in size depending on the floor level. 8. For each unit type, unit sizes and details might be slightly different. Please refer to the sales and purchase agreement for the actual size of each specific unit.

TYPICAL FLOOR

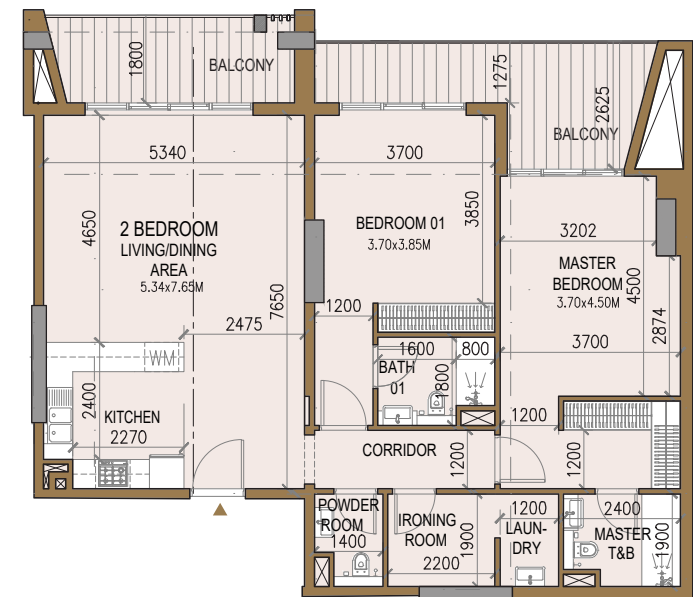
Floors (1 to 4)



TWO BEDROOMS



TYPE (1)
4 Units (floor 1 to 4)



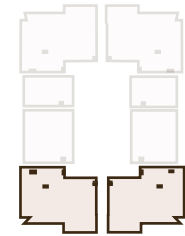
TYPE (2)
4 Units (floor 1 to 4)

TOTAL AREA APPROX.: 125.10 m² - 1,346.58 ft²

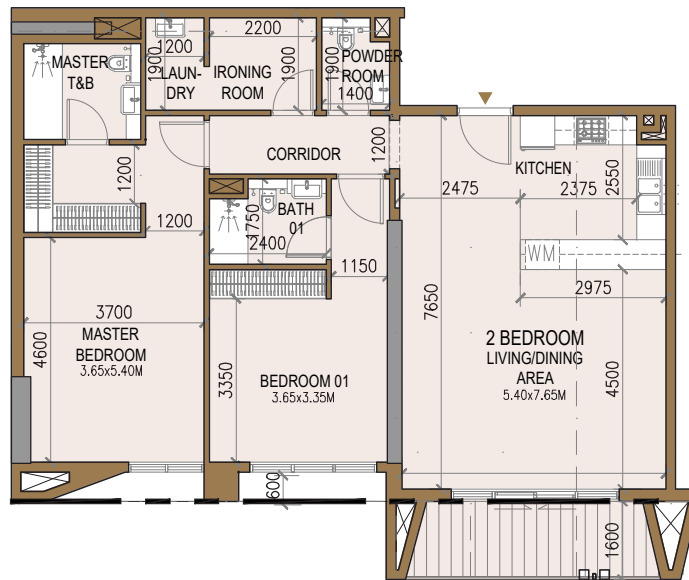
Disclaimer: 1. All room dimensions are measured to structural elements and exclude wall finishes and construction tolerances. 2. All dimensions have been provided by our consultant architects. 3. All materials, dimensions and drawings are approximate. Information is subject to change without notice. 4. Actual suite area may vary from the stated area. Drawings not to scale. The developer reserves the right to make revisions. 5. Calculation of suite area is measured as the area bounded by the centre line of demising or partition walls separating one unit from another unit, the exterior face of all exterior walls, and the exterior face of the corridor wall enclosing the adjoining unit. 6. Calculation of balcony area is measured as the area bounded by the centre line of demising or partition walls separating one unit from another unit, the outmost face of the enclosing guard and the external face of the adjoining balcony. 7. The units are measured at typical floor in the building. Columns may vary in size depending on the floor level. 8. For each unit type, unit sizes and details might be slightly different. Please refer to the sales and purchase agreement for the actual size of each specific unit.

TYPICAL FLOOR

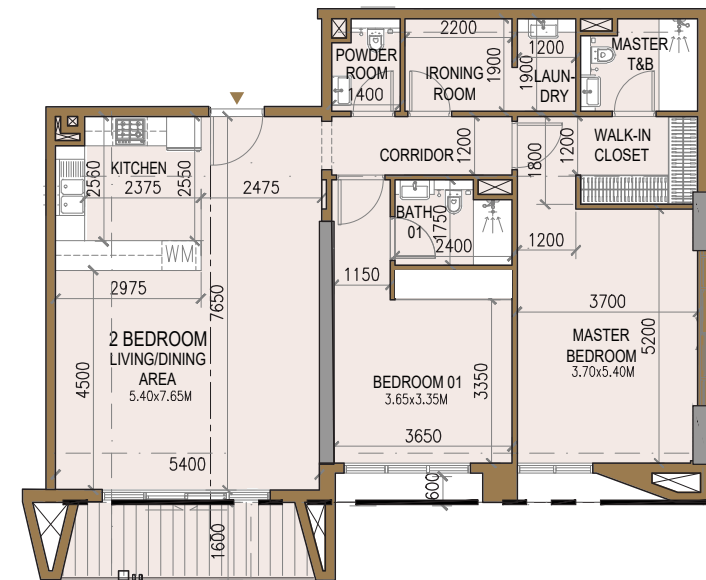
Floors (1 to 4)



TWO BEDROOMS



TYPE (3)
4 Units (floor 1 to 4)



TYPE (4)
4 Units (floor 1 to 4)

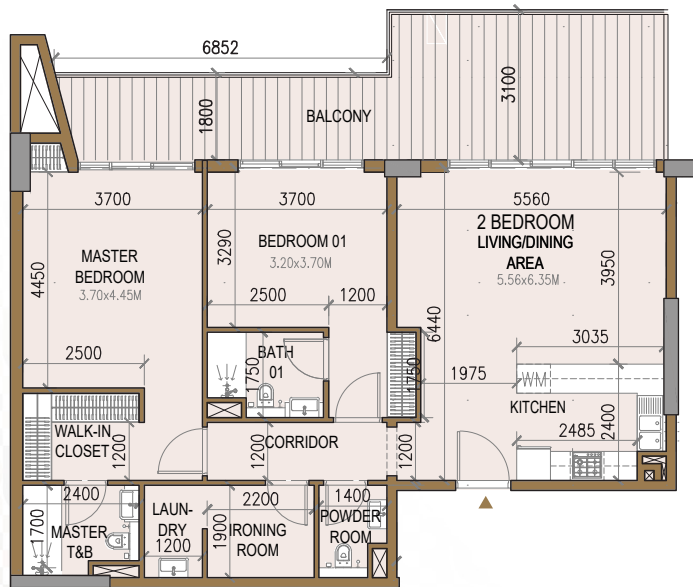
TOTAL AREA APPROX.: 125.10 m² - 1,346.58 ft²

Disclaimer: 1. All room dimensions are measured to structural elements and exclude wall finishes and construction tolerances. 2. All dimensions have been provided by our consultant architects. 3. All materials, dimensions and drawings are approximate. Information is subject to change without notice. 4. Actual suite area may vary from the stated area. Drawings not to scale. The developer reserves the right to make revisions. 5. Calculation of suite area is measured as the area bounded by the centre line of demising or partition walls separating one unit from another unit, the exterior face of all exterior walls, and the exterior face of the corridor wall enclosing the adjoining unit. 6. Calculation of balcony area is measured as the area bounded by the centre line of demising or partition walls separating one unit from another unit, the outmost face of the enclosing guard and the external face of the adjoining balcony. 7. The units are measured at typical floor in the building. Columns may vary in size depending on the floor level. 8. For each unit type, unit sizes and details might be slightly different. Please refer to the sales and purchase agreement for the actual size of each specific unit.

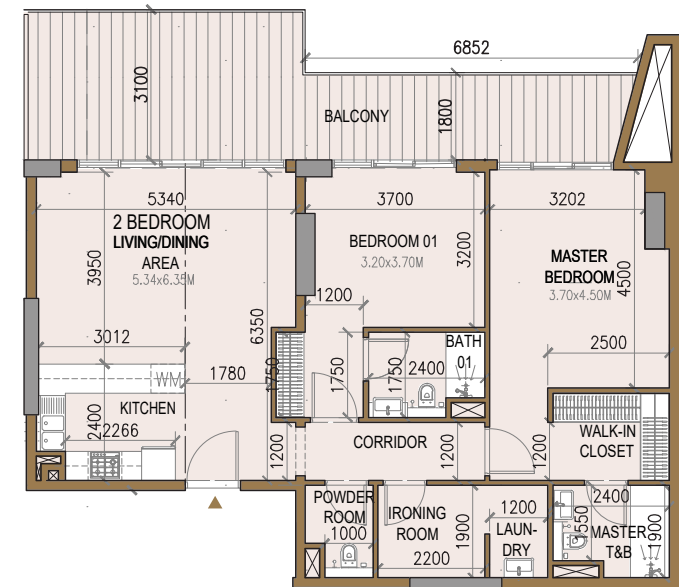
FIFTH FLOOR



TWO BEDROOMS



TYPE (5)
1 Unit (only on fifth floor)

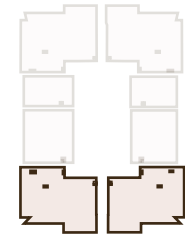


TYPE (6)
1 Unit (only on fifth floor)

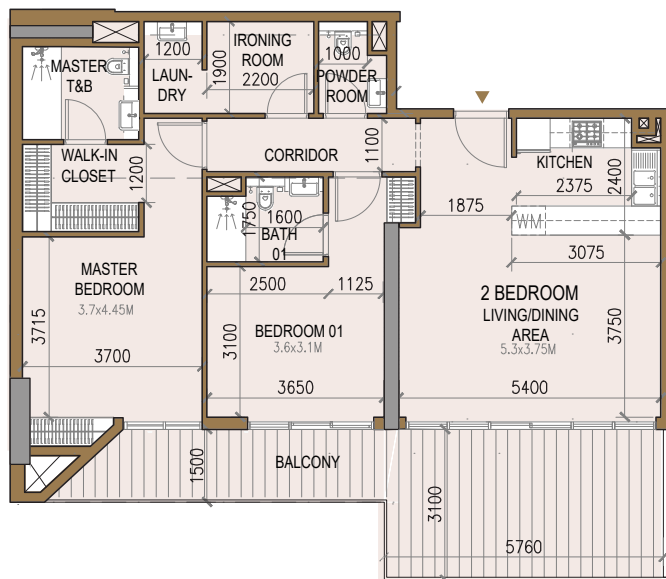
TOTAL AREA APPROX.: 125.10 m² - 1,346.58 ft²

Disclaimer: 1. All room dimensions are measured to structural elements and exclude wall finishes and construction tolerances. 2. All dimensions have been provided by our consultant architects. 3. All materials, dimensions and drawings are approximate. Information is subject to change without notice. 4. Actual suite area may vary from the stated area. Drawings not to scale. The developer reserves the right to make revisions. 5. Calculation of suite area is measured as the area bounded by the centre line of demising or partition walls separating one unit from another unit, the exterior face of all exterior walls, and the exterior face of the corridor wall enclosing the adjoining unit. 6. Calculation of balcony area is measured as the area bounded by the centre line of demising or partition walls separating one unit from another unit, the outmost face of the enclosing guard and the external face of the adjoining balcony. 7. The units are measured at typical floor in the building. Columns may vary in size depending on the floor level. 8. For each unit type, unit sizes and details might be slightly different. Please refer to the sales and purchase agreement for the actual size of each specific unit.

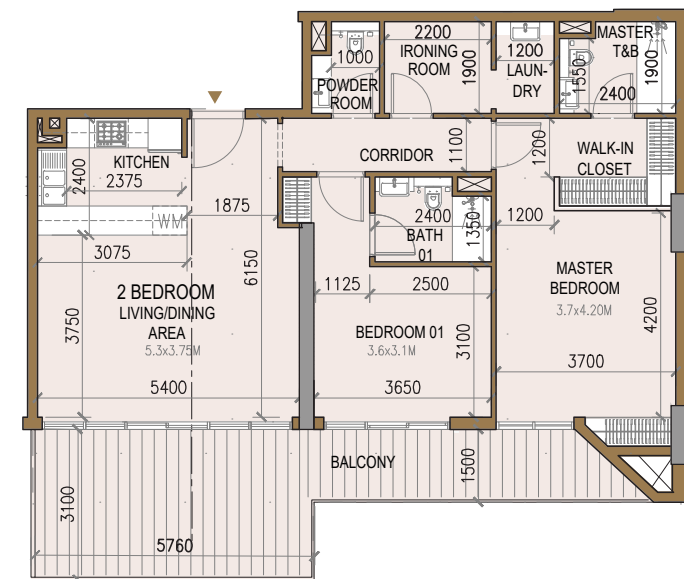
FIFTH FLOOR



TWO BEDROOMS



TYPE (7)
1 Unit (only on fifth floor)



TYPE (8)
1 Unit (only on fifth floor)

TOTAL AREA APPROX.: 125.10 m² - 1,346.58 ft²

Disclaimer: 1. All room dimensions are measured to structural elements and exclude wall finishes and construction tolerances. 2. All dimensions have been provided by our consultant architects. 3. All materials, dimensions and drawings are approximate. Information is subject to change without notice. 4. Actual suite area may vary from the stated area. Drawings not to scale. The developer reserves the right to make revisions. 5. Calculation of suite area is measured as the area bounded by the centre line of demising or partition walls separating one unit from another unit, the exterior face of all exterior walls, and the exterior face of the corridor wall enclosing the adjoining unit. 6. Calculation of balcony area is measured as the area bounded by the centre line of demising or partition walls separating one unit from another unit, the outmost face of the enclosing guard and the external face of the adjoining balcony. 7. The units are measured at typical floor in the building. Columns may vary in size depending on the floor level. 8. For each unit type, unit sizes and details might be slightly different. Please refer to the sales and purchase agreement for the actual size of each specific unit.

MEYDAN

ALTAIF
ALTAIFRED.COM

ALTAIF
ALTAIFRED.COM

ALTAIFRED.COM